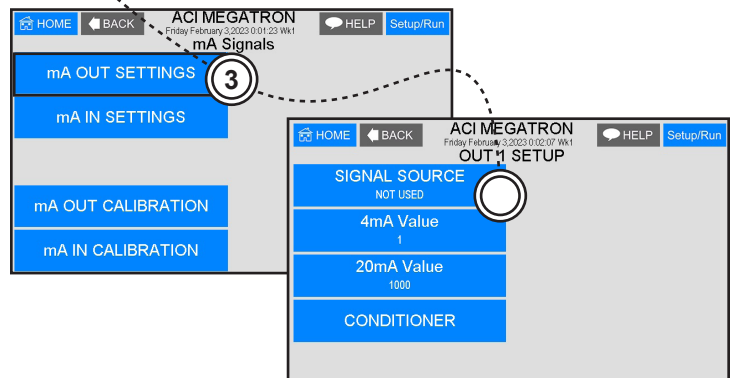
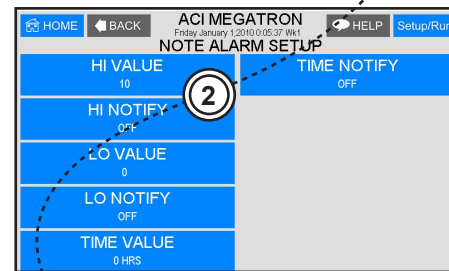
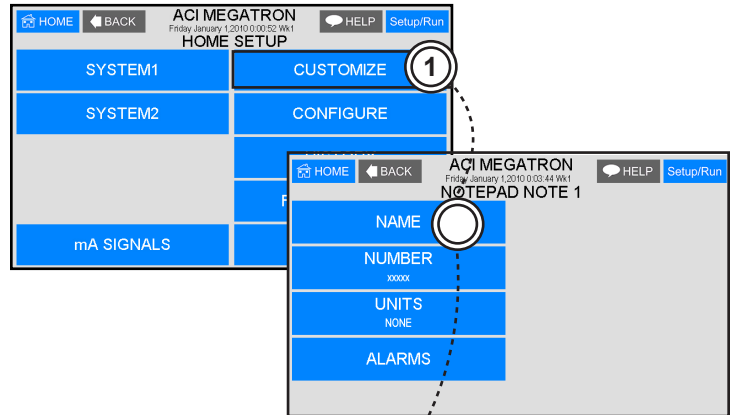


## Using a Notepad to Define a 4-20 mA Output

The source for a 4-20mA output can be one of the Notepad entries on a MegaTron controller. This allows manually entered user data at the controller or via WebAdvantage to determine what the mA output is. To set this up, use the following steps:

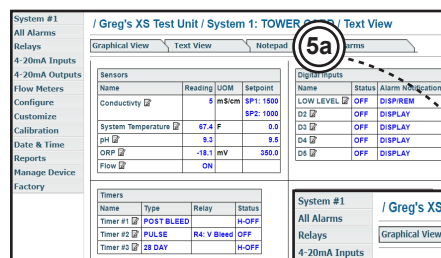
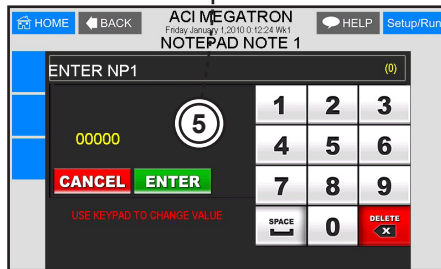
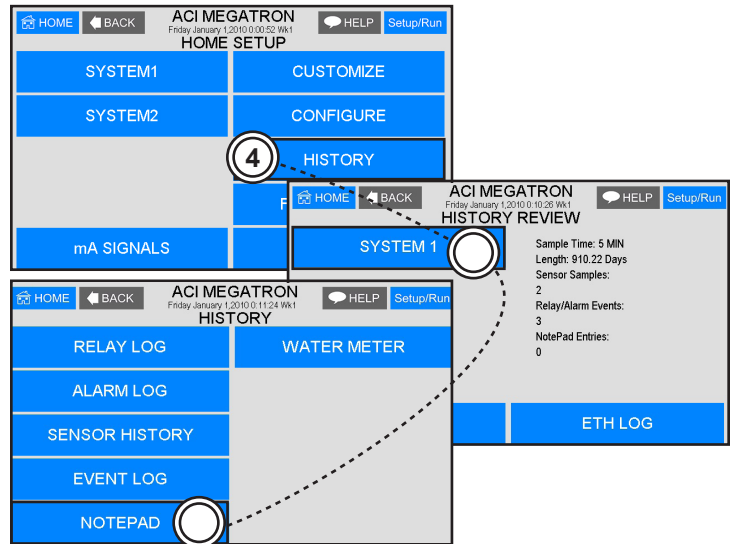
1. Go to the **Customize** menu and select a **Notepad** to use and give it a custom **Name**. Set the **Number** range and desired **Units** of measure.
2. Select the note **Alarms** and set the **Hi Value** and **Lo Value** to establish the range of the mA output desired. **Example:** If the mA output is going to a pump and used to set the pump speed from 0-100% using the XX.XX number range, a Hi alarm or 99.99 and Lo alarm and 00.00 will allow you to enter a value of 25 to have the mA output or pump speed at 25%.
3. Go to the **mA menu** and select **mA Out Settings** and the desired **Output**. The **Signal Source** for the output will need to be the Notepad that has been set up for this use. Define the **4mA Value** to be at 00.00 and the **20 mA Value** to be at 99.99.  
**Note:** mA Out Settings are in the **Setpoint** menu on XS units.



## Using a Notepad to Define a 4-20 mA Output

4. With the Notepad and Output set up, go back to the **Home** menu and select the **History** sub-menu. Select the **System** card the Notepad is on, then select **Notepad**.

5. Select the defined Notepad and enter a value. With the example of 00.00 for Lo Alarm and 99.99 for Hi Alarm, an entry of 25 would have the mA output at 25%.



5a. A new Notepad history can also be entered via WebAdvantage. When logged into the desired system of a unit, select Notepad, then select the defined notepad and enter the desired value for the mA output.

